

Innovative technology in an elegant package

The new BiSecur hand transmitters





reddot design award
honourable mention 2011



HS 5 BS
hand transmitter // NEW
4 button functions
plus inquiry button available
in black and white; full scope
of function only with SupraMatic
and ProMatic operators.



HSE 2 BS
hand transmitter // NEW
2 button functions
incl. key ring, available in black
and white



HS 4 BS
hand transmitter // NEW
4 button functions
only available in black



HS 1 BS
hand transmitter // NEW
1 button function
only available in black

Illustration on left: Enlarged illustration of the HS 5 BS hand transmitter
in white with an optional hand transmitter station

Exclusive design

Select between a black or white*
glossy surface in a piano lacquer look.

Interference-resistant radio signal

with a stable range.

128-bit encryption

Profit from the same high security level
as in online banking.

Simple transmission of coding

Simple copying from hand transmitter
to hand transmitter.

Impact-resistant

The hand transmitter is very
sturdy thanks to a permanently
installed antenna.

Especially long battery service life

under normal conditions, with common
AAA batteries.**

Backwards compatible to the radio frequency 868 MHz

All Hörmann operators with
a radio frequency of 868 MHz
(year of manufacture 2005 – 2011)
can still be used with the new
BiSecur control elements.***

* Not available for HS 4 BS and HS 1 BS

** Only for HS 5 BS, HS 4 BS and HS 1 BS

***Querying the door position
is not possible here.

Mobile radio accessories for every situation



Operate your entrance gate or garage door with a mobile radio transmitter that is as easy to use as your TV remote control. You decide whether you would like a hand transmitter that remains in the vehicle or one to keep on your key ring.



With Hörmann, everything fits together. With just one hand transmitter you can operate your garage door, as well as your Hörmann entrance gate operator.



HSD 2-A BS hand transmitter

Aluminium look,
2 button functions,
can also be used as a key ring

HSD 2-C BS

High-gloss chrome,
2 button functions,
can also be used as a key ring



HSP 4 BS hand transmitter

4 button functions,
with button lock-out,
incl. key ring



HSZ 1 BS hand transmitter

One button function,
for insertion
in vehicle cigarette lighter

HSZ 2 BS

2 button functions,
for insertion
in vehicle cigarette lighter



HF 22 BS radio set

Consisting of an HSZ 2 BS hand transmitter and HET 2 BS receiver

You can still use the practical HSZ 2 BS hand transmitter even if you do not have a Hörmann operator or if your operator does not work with the 868 MHz radio frequency. The HF 22 BS radio set easily converts your operator, allowing you to use all the advantages of the HSZ 2 BS.



HER 1 receiver

A receiver (1, 2 or 4-channel) is needed to operate an additional external light or a garage door (of other make) using Hörmann radio accessories.



HSZ hand transmitter

The inexpensive alternative to expensive homelink systems: integrated in an inconspicuous spot in your car. Inserted in the vehicle's cigarette lighter, the hand transmitter HSZ is easily accessible and convenient to operate.



Simple code transmission

Your individual hand transmitter coding can be easily transmitted to another hand transmitter.

Stationary radio accessories

For outside and inside



You decide how to automatically operate your garage door or entrance gate: using a code or transponder technology. The classic way with a key or via a distinctive fingerprint – the choice is yours!



FCT 3 BS
radio code switch // NEW
 For 3 functions with illuminated buttons



FCT 10 BS
radio code switch // NEW
 For 10 functions with illuminated buttons and protective cover



FFL 12 BS
radio finger-scan // NEW
 For 2 functions and up to 12 finger prints



FIT 2 radio internal push button
 For 2 operators or operator functions



Recessed radio transmitter
 For two functions, in conjunction with a commercially available recessed switch. For central installation in a hallway / living room within sight of the garage door.

HSU 2: for all commercially available switch boxes with 55 mm Ø connection to the house mains supply

FUS 2: incl. 9 V battery / connection option for voltages up to 24 V (not shown).

With 868 MHz fixed code



Radio code switch

Open your garage easily by entering a personal code. No hand transmitter required!

Stationary, convenient accessories for outside



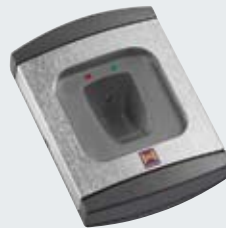
CTR 1d / CTR 3d code switch
For 1 or 3 functions with hinged protective cover.



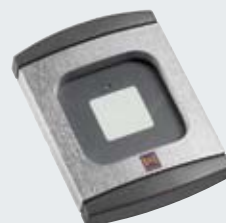
CTR 1b / CTR 3b code switch
For 1 or 3 functions, with illuminated buttons and weather-resistant membrane keypad.



CTV 1 / CTV 3 code switch
For 1 or 3 functions, especially robust, protected against vandalism.



FL 12 / FL 100 finger-scan
For 2 functions, to open the garage door via a fingerprint. Can store 12 or 100 fingerprints, respectively.



TTR 100 / TTR 1000 transponder key switch
For 1 function with 2 keys (more on request) for up to 12 / 100 / 1000 keys.

**IT 1 internal push button**

With impulse button to open and close the door (for ProMatic, SupraMatic and ProMatic Akku).

**IT 1b internal push button**

You can conveniently open the door by pushing the large, illuminated button on the IT 1b (for ProMatic and SupraMatic).

**IT 3b internal push button**

Along with a large illuminated button for conveniently opening the door, the internal push button IT 3b has two additional buttons. These can be used to control the operator light and completely switch off the radio-control system for the operator, e.g. while you are away on holiday (for SupraMatic).

**PB 3 internal push button**

With illuminated impulse button to open or close the door, button for garage light and button to switch off the radio system (for SupraMatic).

**STUP 40 / STAP 40 key switch**

In recessed and surface-mounted versions, including 3 keys.

**ESU 40 / ESA 40 key switch**

In recessed and surface-mounted versions, including 3 keys.

**Key switch post STS 1**

The key switch post STS is available with one or two adapters for command units (must be ordered separately). You can install a transponder key switch TTR 100 and TTR 1000, radio code switch FCT 10b or code switch CTR 1 or 3. The post is stove-enamelled in White aluminium (RAL 9006), the cover and base in Slate grey (RAL 7015). Protected for outdoor use in accordance with IP 44.

Height: 1250 mm,
base diameter: 300 mm.



The illustration shows a key switch post with fitted STUP 40 key switch (optional).